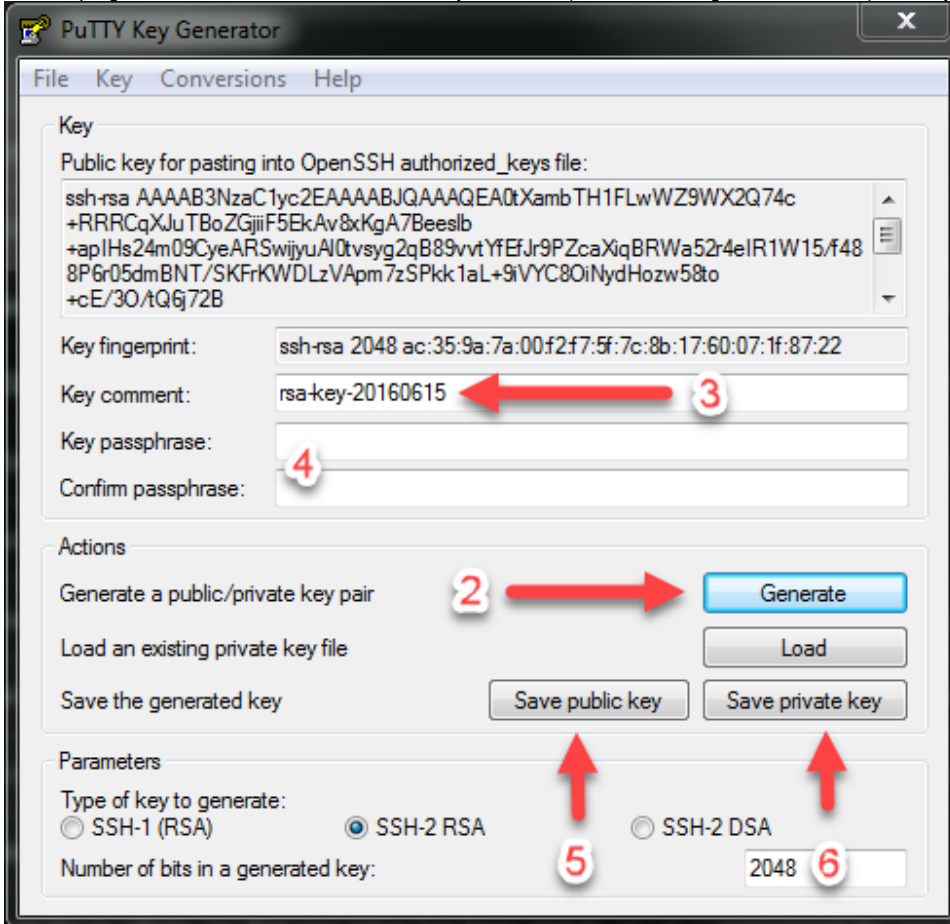


SSH Key

- [Generating a SSH Key in a Windows](#)
- [Generating a SSH key on Linux](#)
- [Converting SSH Keys to PPK Format](#)
- [SSH Keys converting to PPK Format](#)

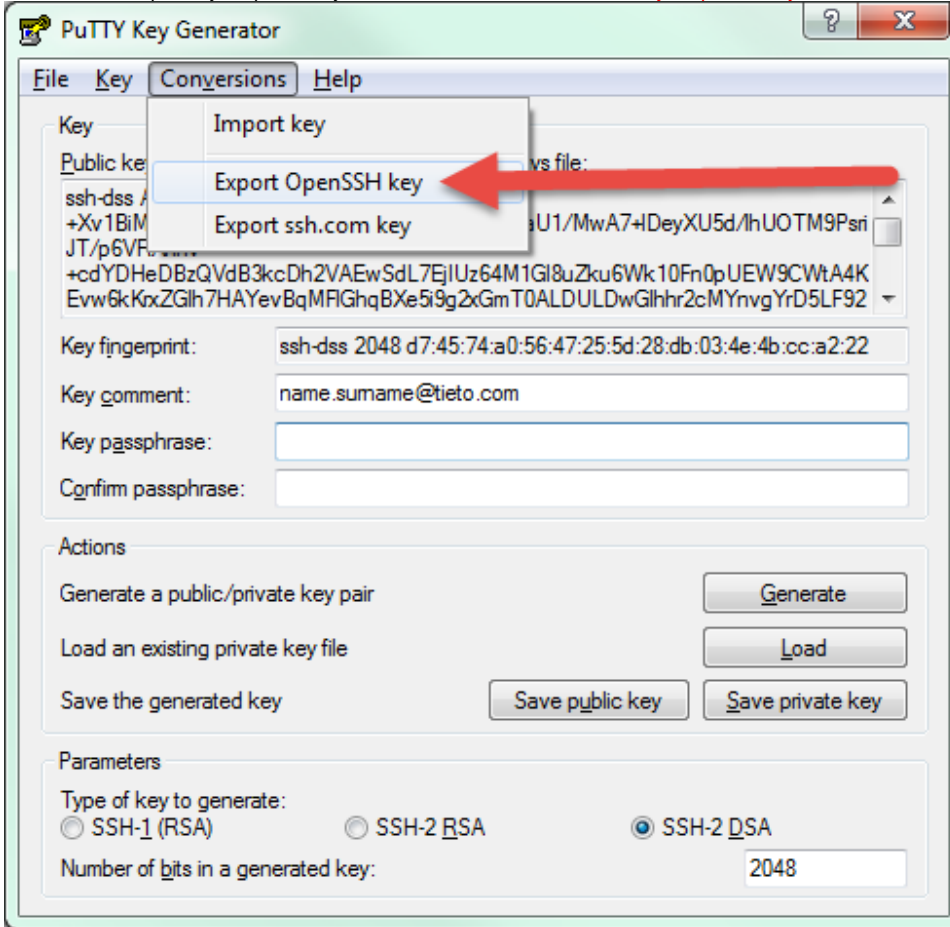
Generating a SSH Key in a Windows

1. Download Putty Key Generator
2. Run the program and click on **Generate** and move your mouse (within the SSH generator window) until key is generated

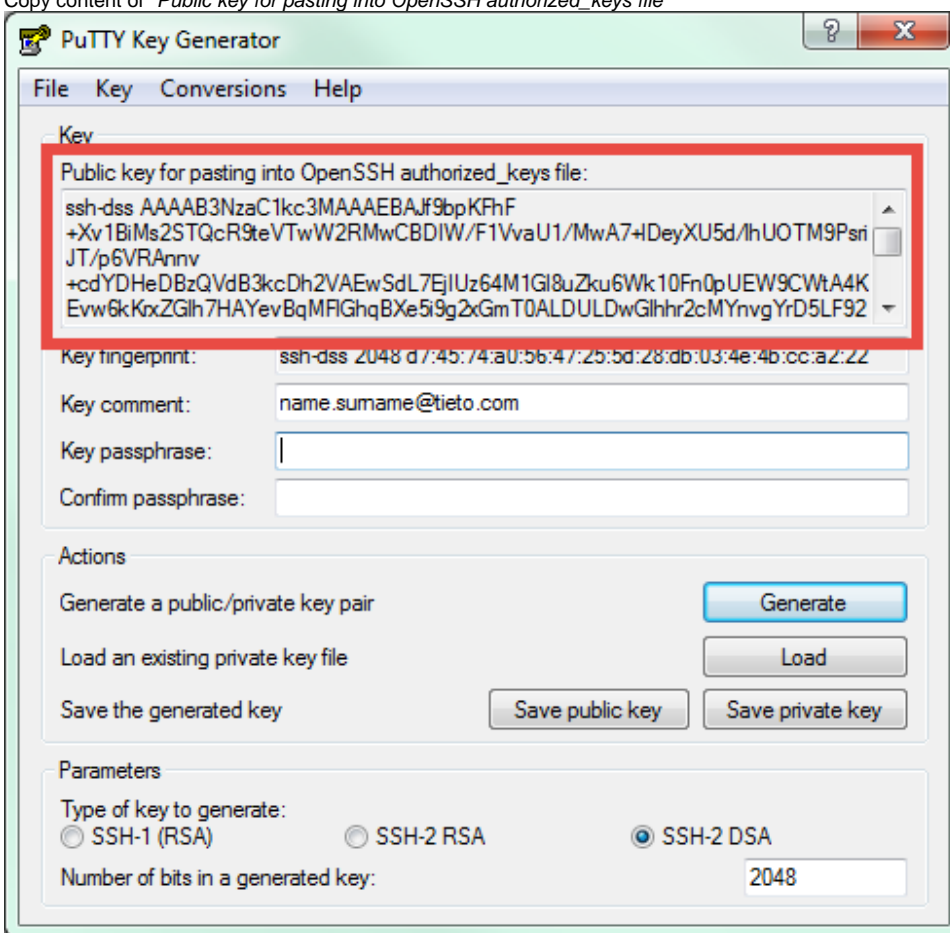


3. Change *Key comment* to your Tieto email address in format [name.surname@tieto.com](mailto:yourname.surname@tieto.com)
4. Optional: fill *Key passphrase* and confirm passphrase if you need one.
If you skip this step then you need to confirm that you want to save the keys without passphrase in the next steps.
5. Save public key as **id_rsa.pub**
6. Save private key as **id_rsa.ppk**

7. From the top menu in Conversions select Export OpenSSH Key and save it as *id_rsa*
Note that id_rsa.pub is your public key and can be shared, while id_rsa is **your private key and should be kept secret**.



8. Copy content of "Public key for pasting into OpenSSH authorized_keys file"



9. Go to the Portal and click on you name and then on SSH and then click on **Add or change key**
10. Paste copied key from the step 8. Click on the **Save** button.

SSH key must be in the following format: **[key-type] [key] [user-identifier]**

[key-type] use *ssh-rsa*

[key] is the public key

[user-identifier] is your email address in format *name.surname@tieto.com*

Make sure not to include any "ENTER" or SPACE key between the portions of the inserted text.

Generating a SSH key on Linux

1. From the Terminal or Git Bash, run `ssh-keygen`
2. Confirm the default path `~/.ssh/id_rsa`
3. Enter a passphrase (recommended) or leave it blank.
Remember this passphrase, as you will need it to unlock the key whenever you use it.
4. Open `~/.ssh/id_rsa.pub` and copy & paste the contents into the box below, then click on "Add".
Note that `id_rsa.pub` is your public key and can be shared, while `id_rsa` is **your private key and should be kept secret**.
5. Go to TDS portal and click on your name and then in left menu on SSH and then on **Add or change key**
6. Paste the SSH key and click on the **Save** button.

Once you upload an SSH key it will be used on newly created server for authentication.

SSH key must be in the following format: **[key-type] [key] [user-identifier]**

[key-type] use *ssh-rsa*

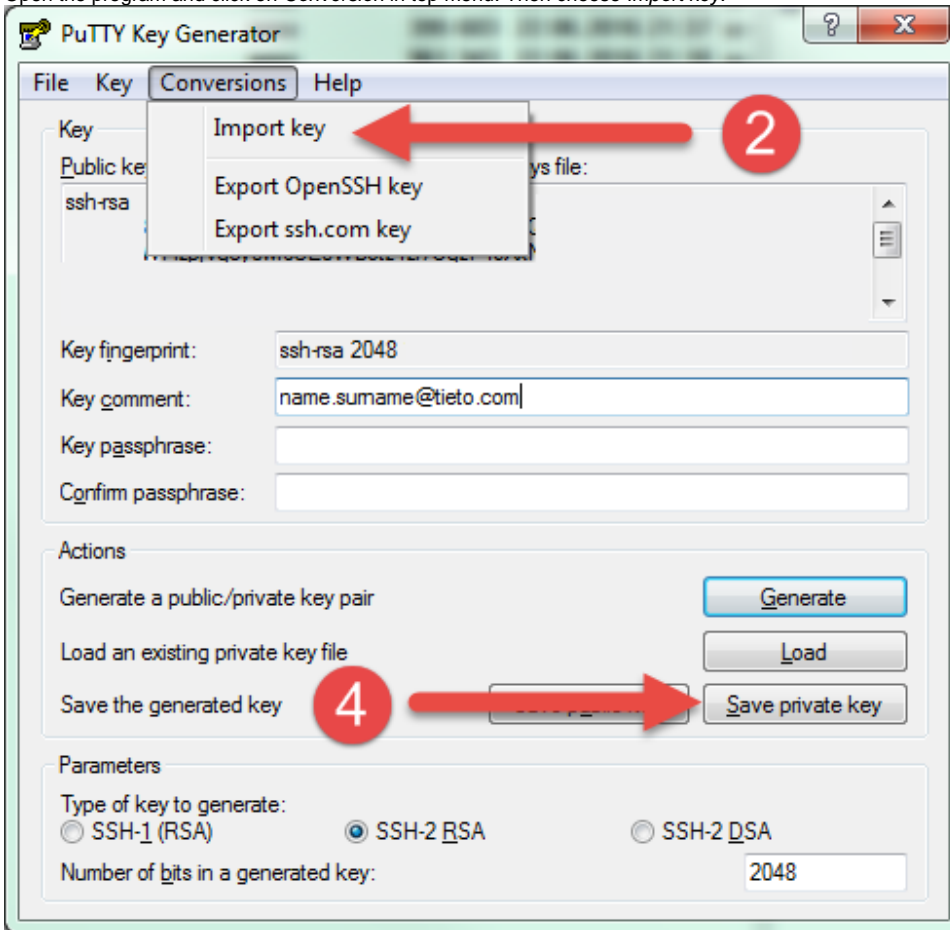
[key] is the public key

[user-identifier] is your email address in format *name.surname@tieto.com*

Make sure not to include any "ENTER" a SPACE keys between the portions of the inserted text.

Converting SSH Keys to PPK Format

1. [Download PuTTY Key Generator](#)
2. Open the program and click on *Conversion* in top menu. Then choose *Import key*.

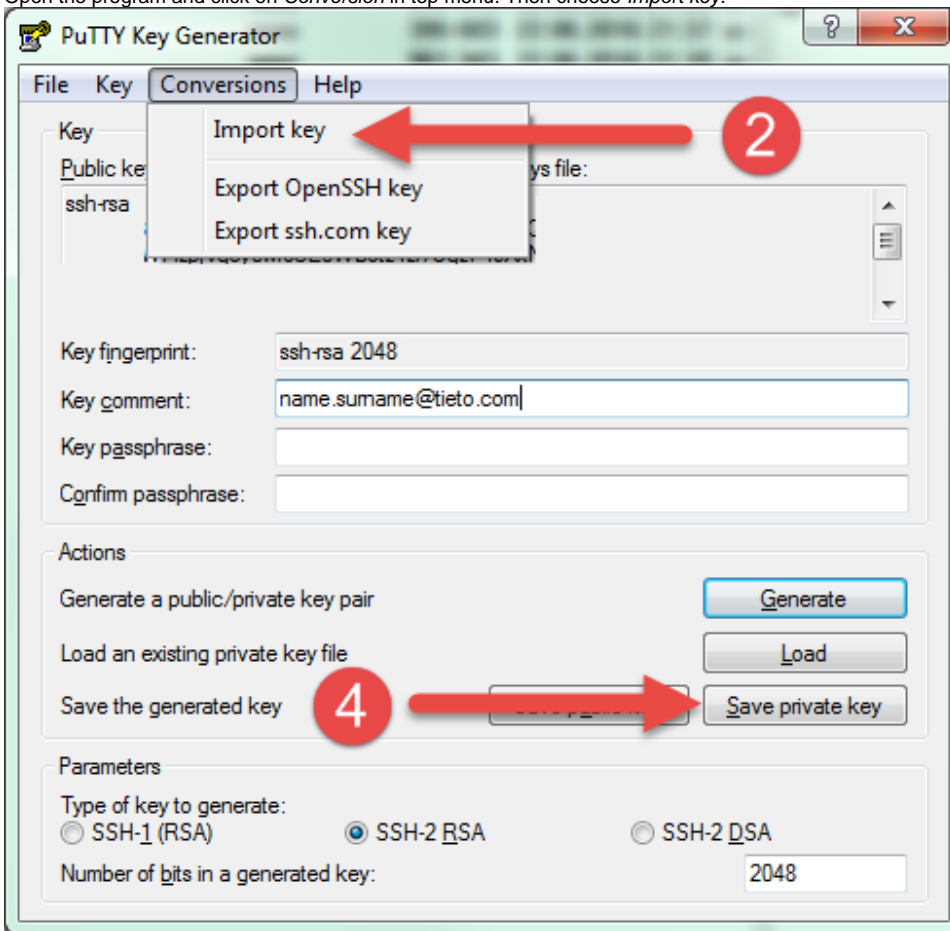


3. Locate your key in your computer and click open.
4. Once the key is loaded, you can save it as PPK file by clicking on **Save Private Key** or on **Save Public Key** if you want public version of your key.

SSH Keys converting to PPK Format

1. [Download PuTTY Key Generator](#)

2. Open the program and click on *Conversion* in top menu. Then choose *Import key*.



3. Locate your key in your computer and click open.

4. Once the key is loaded, you can save it as PPK file by clicking on **Save Private Key** or on **Save Public Key** if you want public version of your key.